

HARDWARE

H1 M5 X 25 SOCKET CAP SCREW

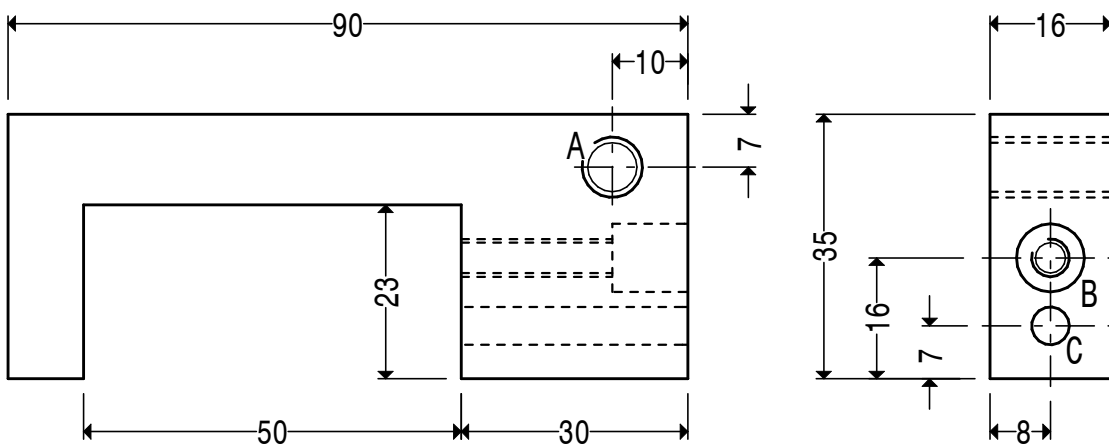
H2 M8 X 40 STEEL HEXAGON HEAD SCREW

MACHINE SCREW END AS SHOWN

A LONGER SCREW H2 MAY BE NEEDED WHEN THE STOP IS USED AT THE TAILSTOCK END OF THE SADDLE.



SADDLE STOP FOR MYFORD SERIES SEVEN LATHE

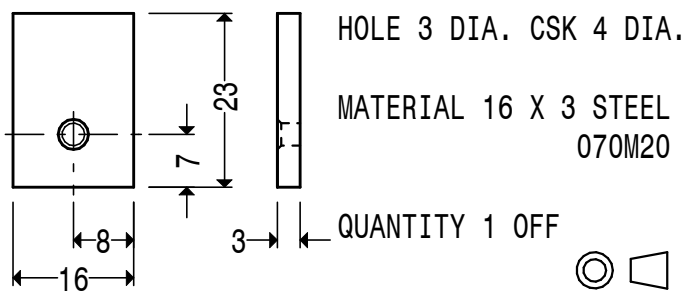


HOLES A M8 B M5 CB 9 DIA. 10 DEEP C 5.1

MATERIAL 35 X 16 STEEL 070M20 QUANTITY 1 OFF



BODY 1

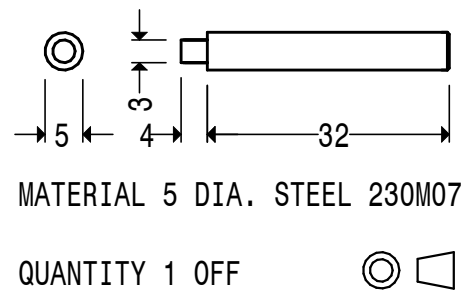


HOLE 3 DIA. CSK 4 DIA.
MATERIAL 16 X 3 STEEL 070M20

QUANTITY 1 OFF



CLAMP PLATE 2



MATERIAL 5 DIA. STEEL 230M07

QUANTITY 1 OFF



SUPPORT PIN 3