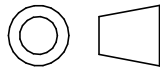


MATL. 35 DIA. ALUMINIUM 2011T6  
16 DIA CAST IRON

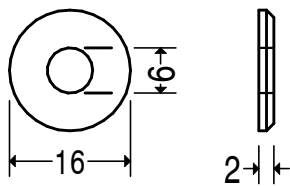
FIT CAST IRON BEARING BUSH  
USING TWO PART RESIN ADHESIVE

QTY. 3 OFF

IDLER PULLEYS



D2



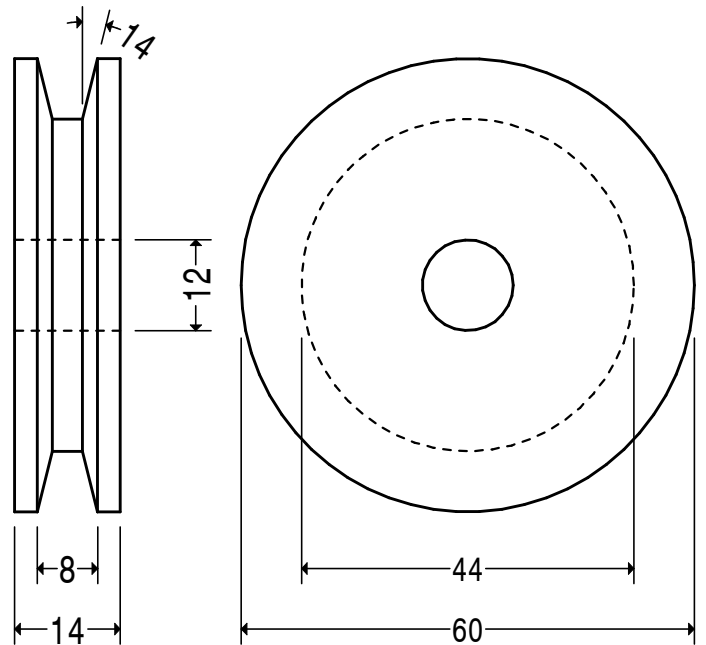
MATERIAL  
16 DIA. STEEL 230M07

QTY. 4 OFF



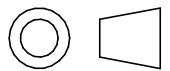
PULLEY RETAINING  
WASHER

D5



MATL. 60 DIA. ALUMINIUM 2011T6

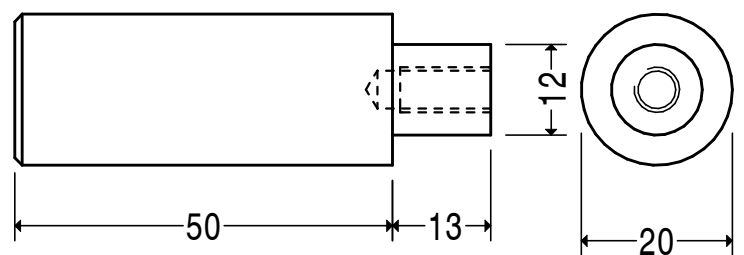
QTY. 2 OFF



WIDTH OF GROVE MUST SUIT DRIVE BELT  
BEING USED. THE BELT SHOULD CONTACT  
THE SIDES OF THE GROVE ONLY TO  
ENSURE SUFFICIENT GRIP. DIMENSIONS  
SUIT A BELT HAVING A NOMINAL 8 MM  
DIAMETER.

MAIN PULLEYS

D7



HOLE M6 X 12 DEEP

MATL. 20 DIA. STEEL 230M07 QTY. 1 OFF

DRIVE INPUT SPINDLE

D8