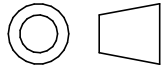
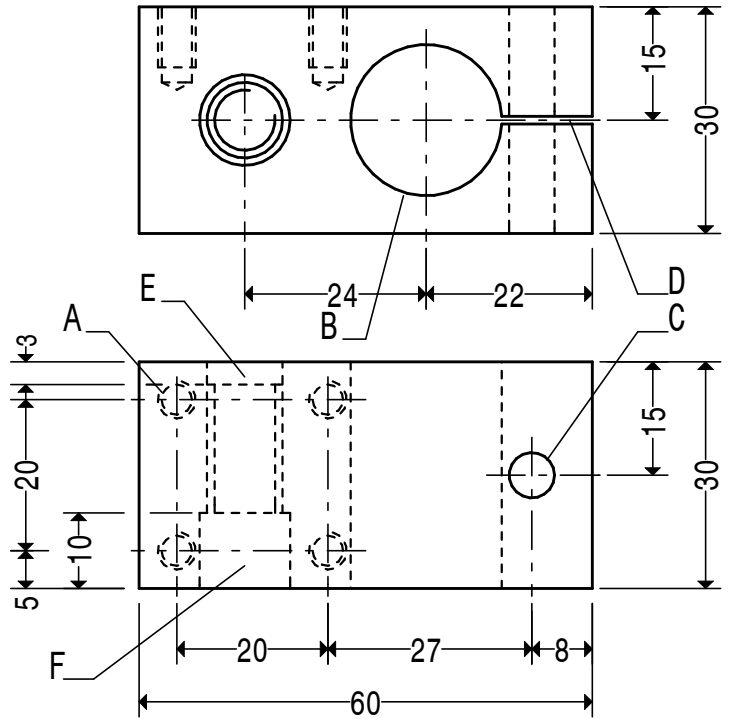


HOLES

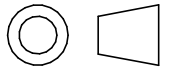
A M5 2 OFF B 20 C 7
D SLOT 1 WIDE



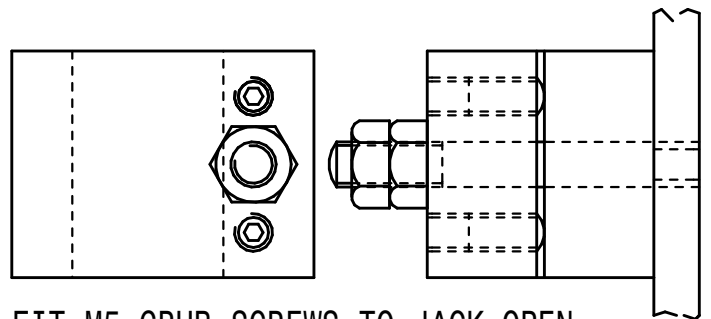
MATL. CAST IRON QTY. 3 OFF
SLIDER BLOCK C15



HOLES A M5 4 OFF B 20 C 7
D SLOT 1 WIDE
E 10 X 2 SQUARE THREAD
F 12



MATL. CAST IRON QTY. 1 OFF
SLIDER BLOCK C14



FIT M5 GRUB SCREWS TO JACK OPEN
BLOCK IF HOLE CLOSSES WHEN SLOT IS CUT.
STUD WITH CLOSING NUTS SHOULD STILL
BE FITTED AND ADJUSTED.

SLIDER BLOCK
WITH JACKING SCREWS SK1