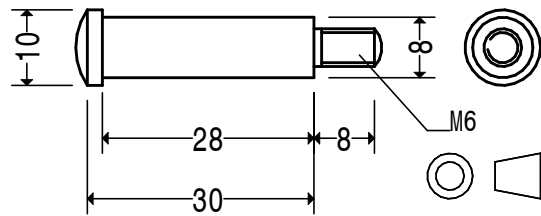
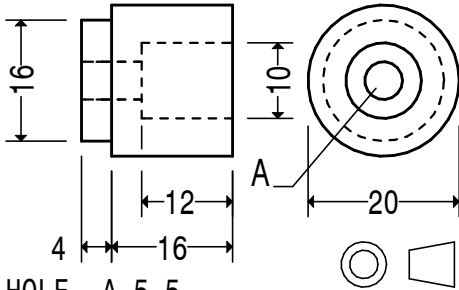


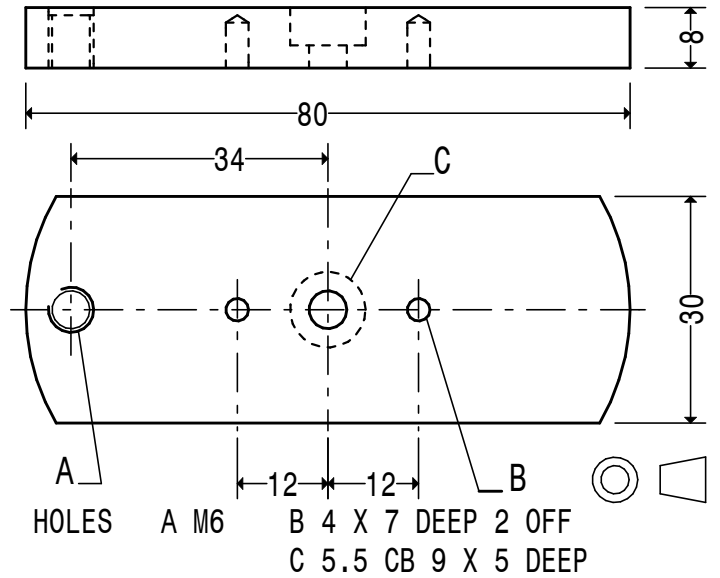
MATL. 10 DIA. STEEL 230M07  
 QTY. 1 OFF  
OPERATING HANDLE OUTER C7



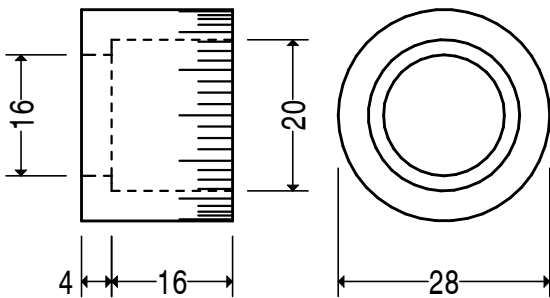
MATL 10 DIA. STEEL 230M07  
 QTY. 1 OFF  
OPERATING HANDLE PIN C6



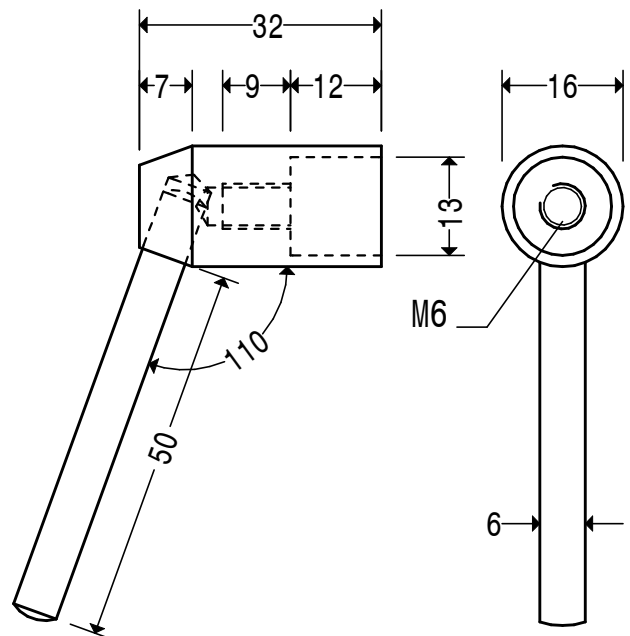
HOLE A 5.5  
 MATL. 20 DIA. STEEL 230M07  
 QTY. 1 OFF  
LEADSCREW BUSH C10



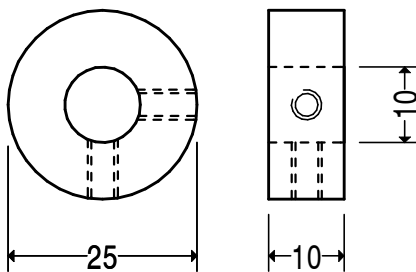
MATL. 30 X 8 STEEL 070M20 QTY. 1 OFF  
OPERATING HANDLE ARM C8



MATL. 30 DIA. STEEL 230M07  
 QTY. 1 OFF  
 CALIBRATE TO SUIT PITCH OF  
 CHOSEN LEADSCREW  
LEADSCREW DIAL C9



MATERIALS 16 DIA. STEEL 230M07  
 6 DIA. STEEL 230M07  
 QTY. 2 OFF  
COLUMN CLAMP HANDLE C5



HOLES M4 2 OFF  
 MATL. 30 STEEL 230M07  
 QTY. 1 OFF  
LEADSCREW COLLAR C12