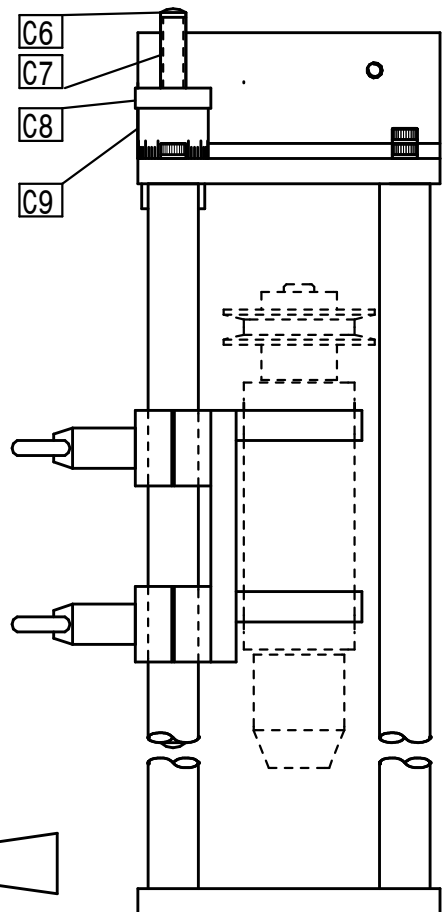
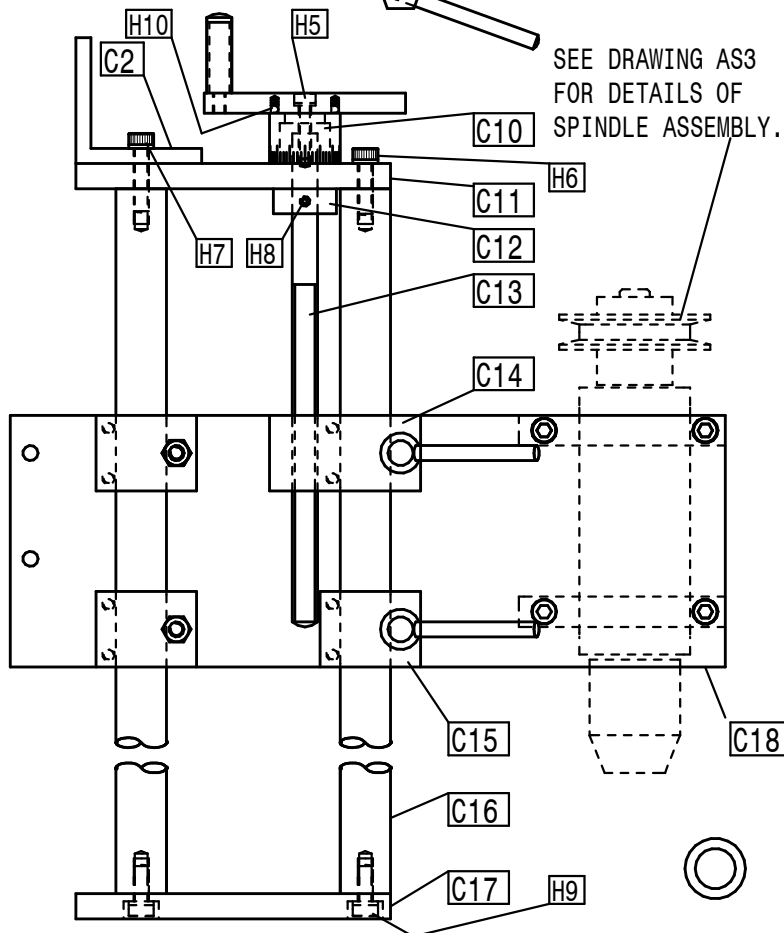


HARDWARE

- H1 M5 X 16 SKT CAP SCREW 10 OFF
- H2 M6 FULL NUTS 8 OFF
- H3 M6 X 20 SCT CAP SCREW 2 OFF
- H4 M6 X 40 SCT CAP SCREW 2 OFF
- H5 M5 X 20 SCT CAP SCREW 1 OFF
- H6 M6 X 20 SCT CAP SCREW 2 OFF
- H7 M6 X 25 SCT CAP SCREW 2 OFF
- H8 M4 X 5 SCT GRUB SCREW 2 OFF
- H9 M6 X 14 SCT CAP SCREW 4 OFF
- H10 4MM STEEL BALL AND
COMPRESSION SPRING 2 OFF



COLUMN ASSEMBLY

AS1