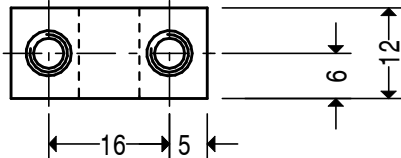
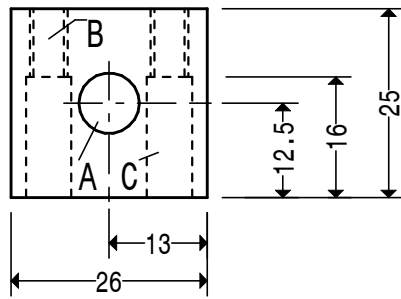
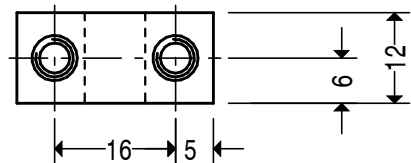
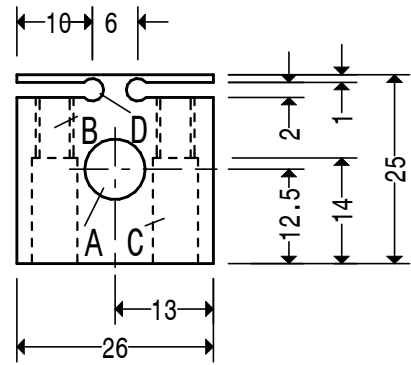


HOLES. A. 8.5 B. M4 C. 4.5 QUANTITY. 1 OFF AS DRAWN
 MATERIAL. 20 X 10 STEEL 070M20 1 OFF WITH HOLES B AND C OMITTED
LOW PROFILE CLAMP BAR FOR A MYFORD LATHE



HOLES. A. 8.5 B. M5 C. 5.5
 QUANTITY. AS REQUIRED
 MATERIAL. 25 X 12 STEEL 070M20
LOW PROFILE CLAMP



HOLES.
 A. 8.5 B. M5 C. 5.5 D. 3
 QUANTITY. AS REQUIRED
 MATERIAL. 25 X 12 STEEL 070M20
IMPROVED
LOW PROFILE CLAMP